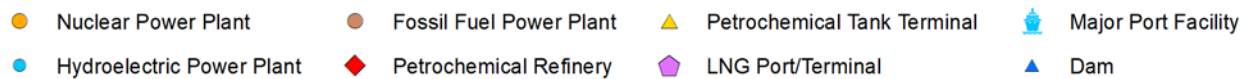
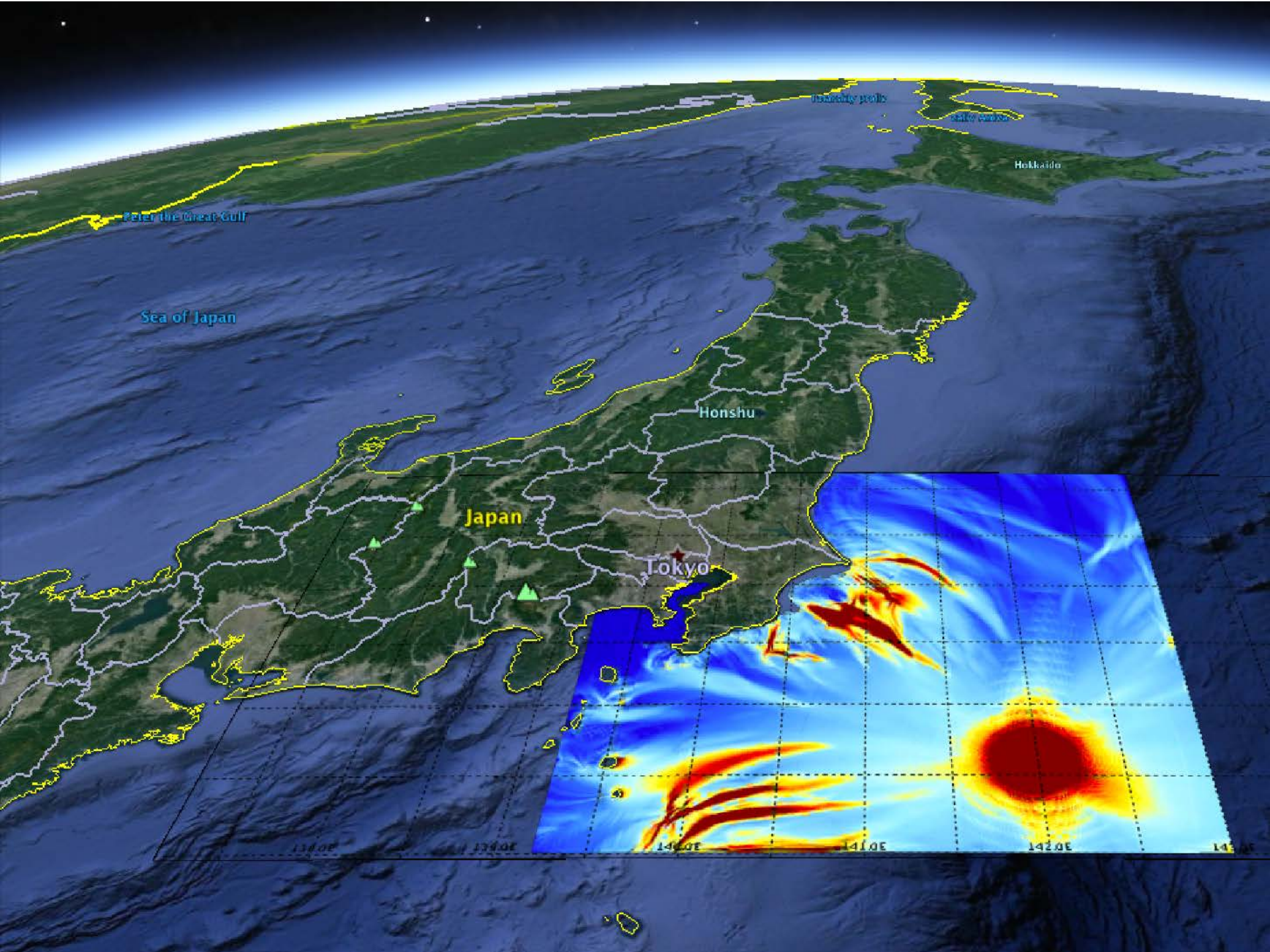
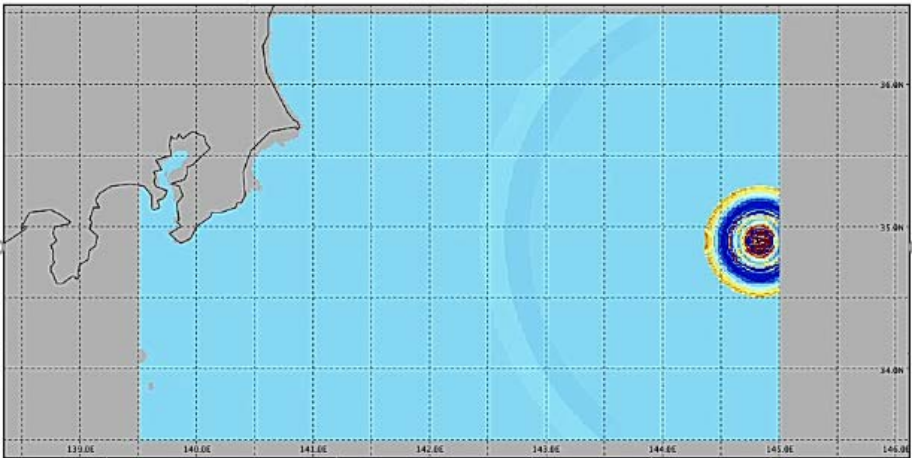


Country	Fossil Fuel Power plant	Hydro Power Plant	Nuclear Power Plant	Petrochemical Refinery	Petrochemical Tank Terminal	LNG Terminal	Dams	Major Port Facilities
China	72	1	0	5	31	0	5	5
Japan	279	16	3	9	19	0	107	18
North Korea	1	1	0	0	0	0	7	1
South Korea	60	10	0	2	9	2	20	5
TOTAL	412	28	3	16	59	2	139	29

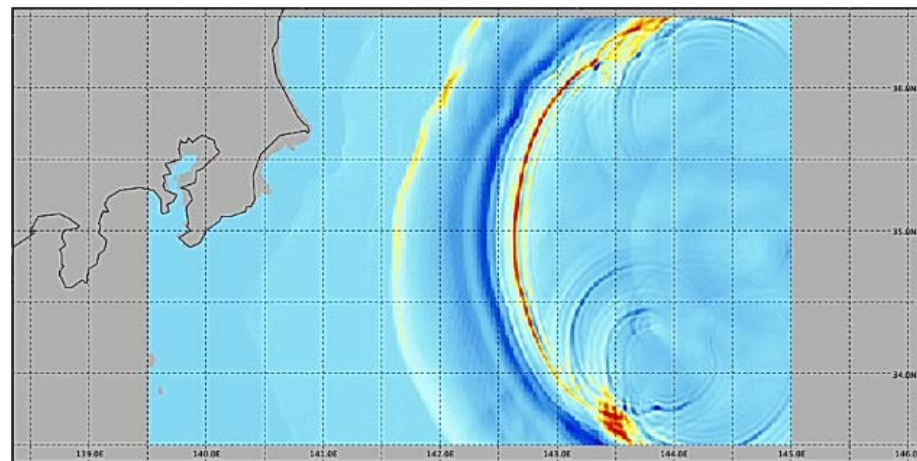




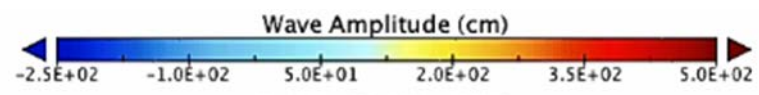
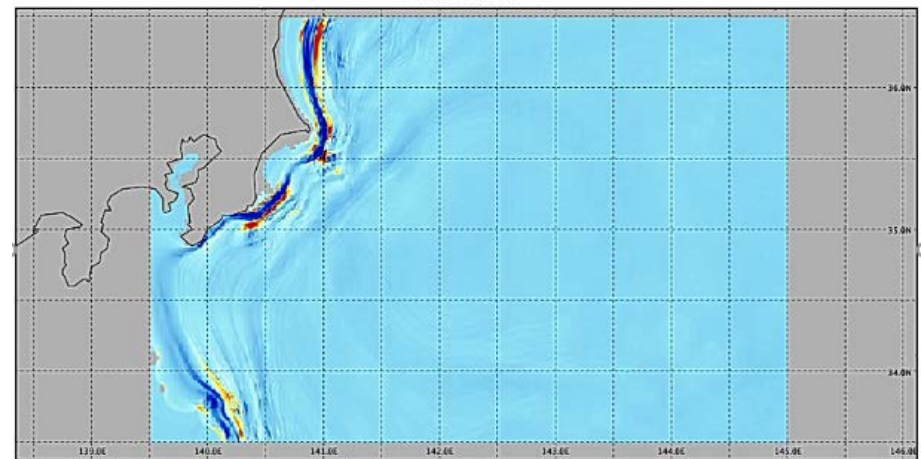
Time: 80.0000



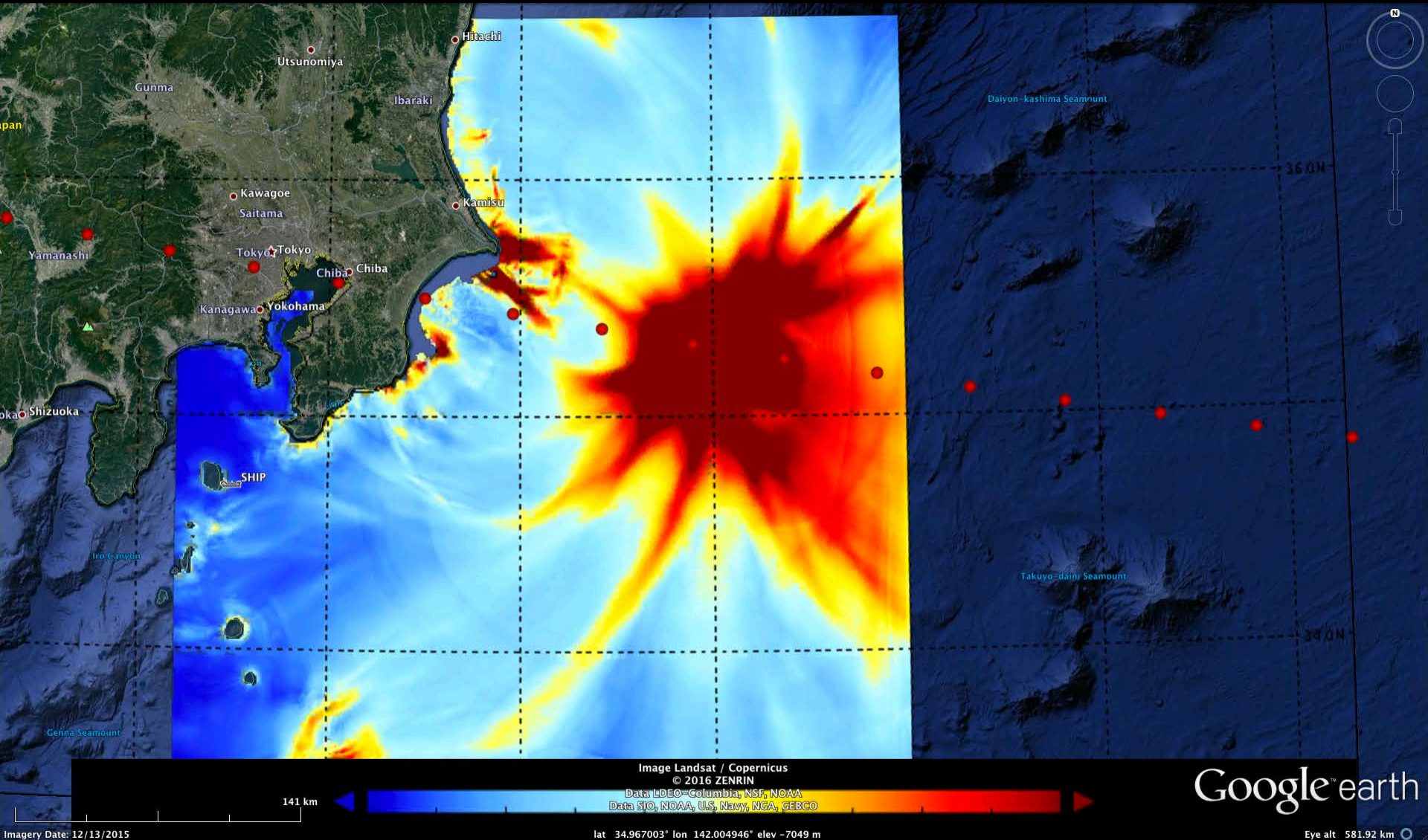
Time: 904.000



Time: 2184.00

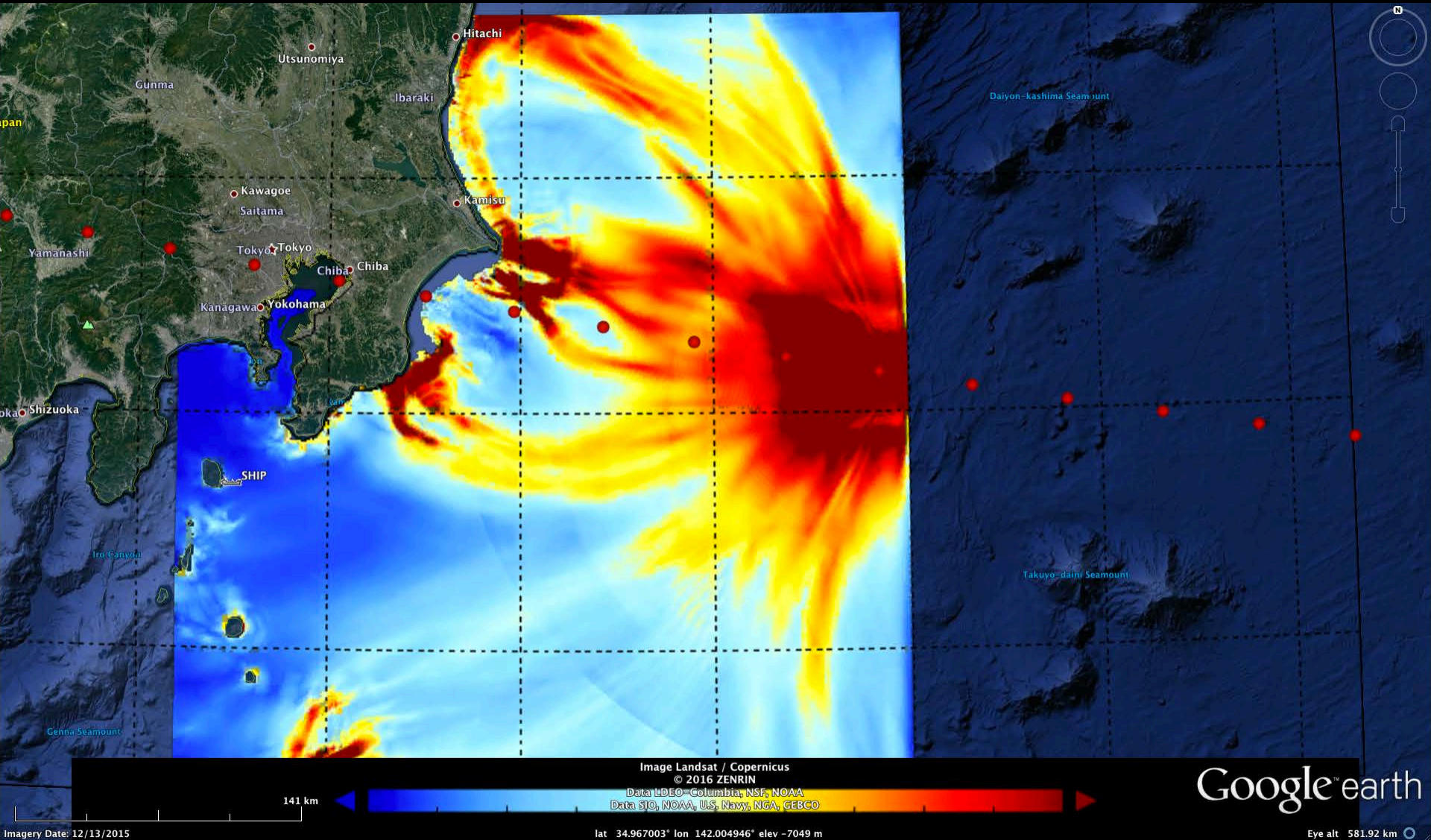


Maximum wave heights Impact on shore-side of Japan Trench



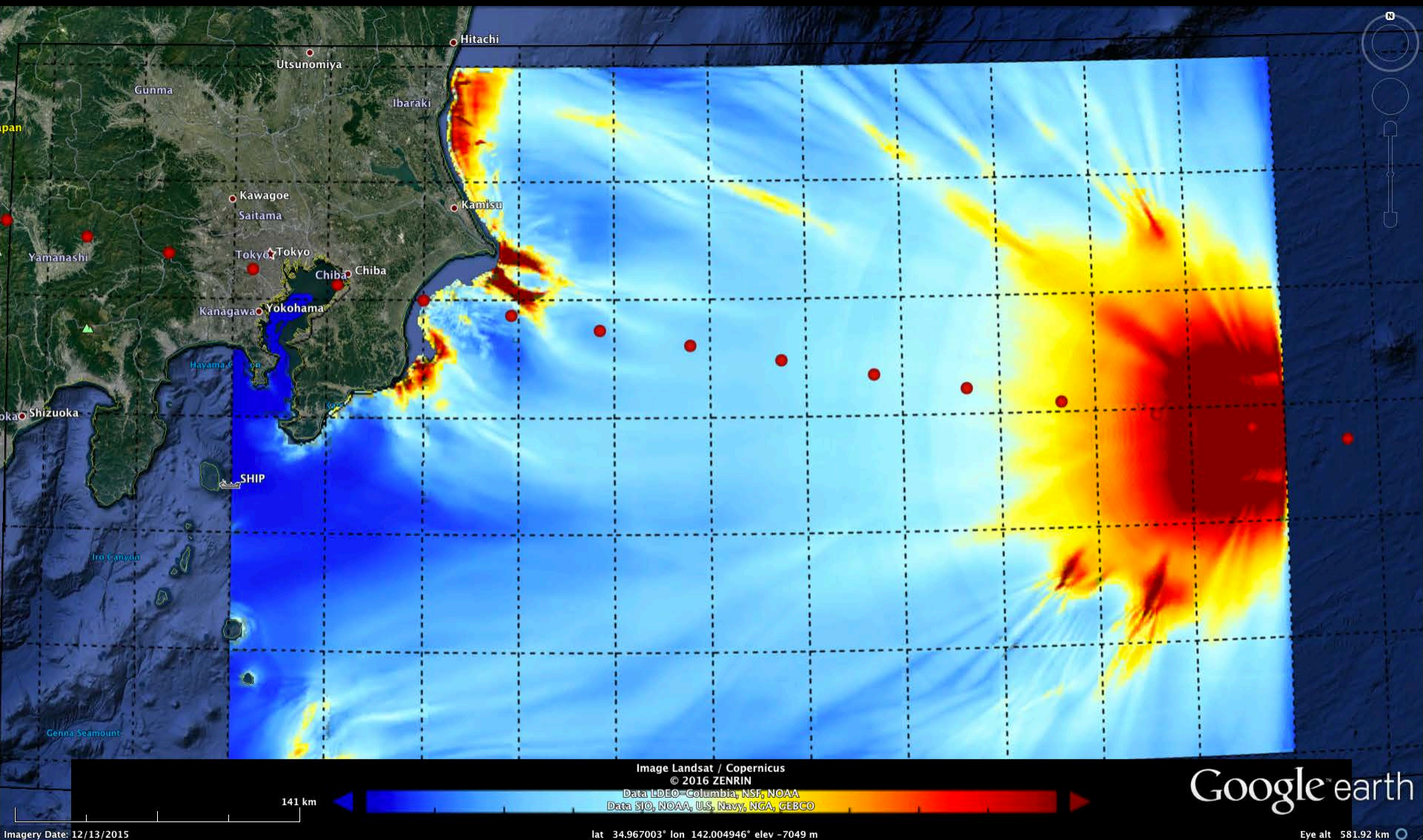
Max depth at shore = 25 m, Flooded area = 54.8 km²

Maximum wave heights Impact on offshore-side of Japan Trench



Max depth at shore = 29 m, Flooded area = 46.1 km²

Maximum wave heights Impact 400 km away in middle of oceanic plane



Max depth at shore = 25 m, Flooded area = 46.5 km²



	Population
All inundation	27,480
Inundation > 0.5 meters	17,850

- Area of Inundation
- Nuclear Power Plant
- Fossil Fuel Power Plant
- Petrochemical Tank Terminal
- Major Port Facility
- Hydroelectric Power Plant
- Petrochemical Refinery
- LNG Port/Terminal
- Dam

